

FRP WALKWAY

CHEMITECH CONSTRUCTIONS PVT LTD

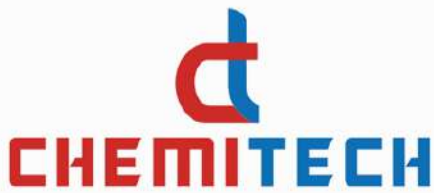


LEADING MANUFACTURER OF HIGH QUALITY

SOLAR PANEL WALKWAYS

Email -akarsh@chemitechgroup.com

Contact No. +91-9717591111



About Us

- ▶ Incorporated in 2006, Chemi Tech Constructions Pvt. Ltd. is one of the leading manufacturers of FRP WALKWAYS, ACDB & DCDB in India.
- ▶ With a successful track record of supplying high quality Walkways, ACDBs & DCDBs for various Multi National and fortune 500 companies in India, now Chemi Tech Constructions Pvt. Ltd. has ventured into manufacturing of FRP products for "Solar Industry".
- ▶ Our manufacturing process involves the use of the best quality raw material and state-of-the-art equipment in accordance with international standards.
- ▶ The characteristics of our FRP products such as robust construction, corrosion resistance, dimensional precision, low maintenance and durable finishing quality are greatly appreciated by our customers.
- ▶ Moreover, our manufacturing unit is capable of manufacturing custom made sizes in short duration.
- ▶ Our entire product goes through several quality checks with diverse parameters to ensure flawless products is delivered to our customer.

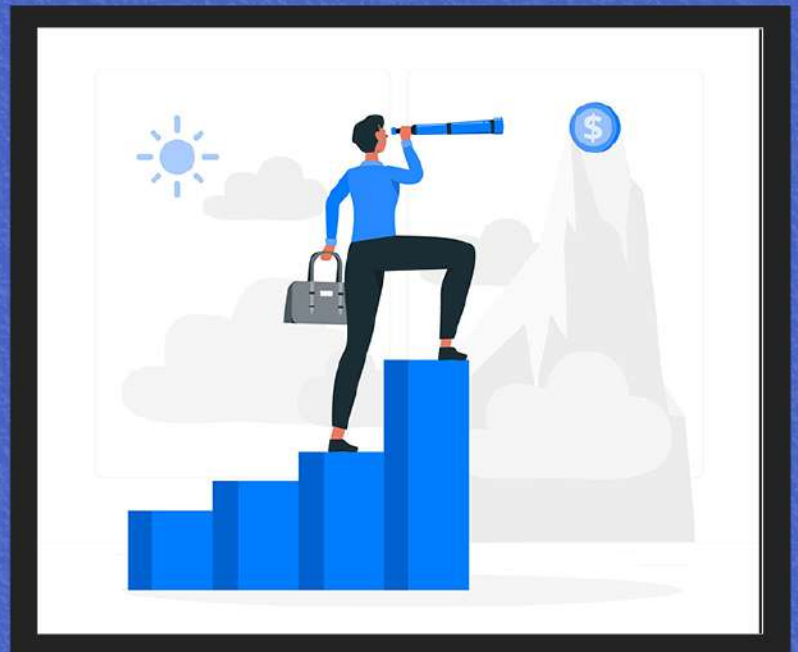


MISSION

Our mission is to deliver innovative, premium quality and cost-effective FRP products to customer in India and Abroad.

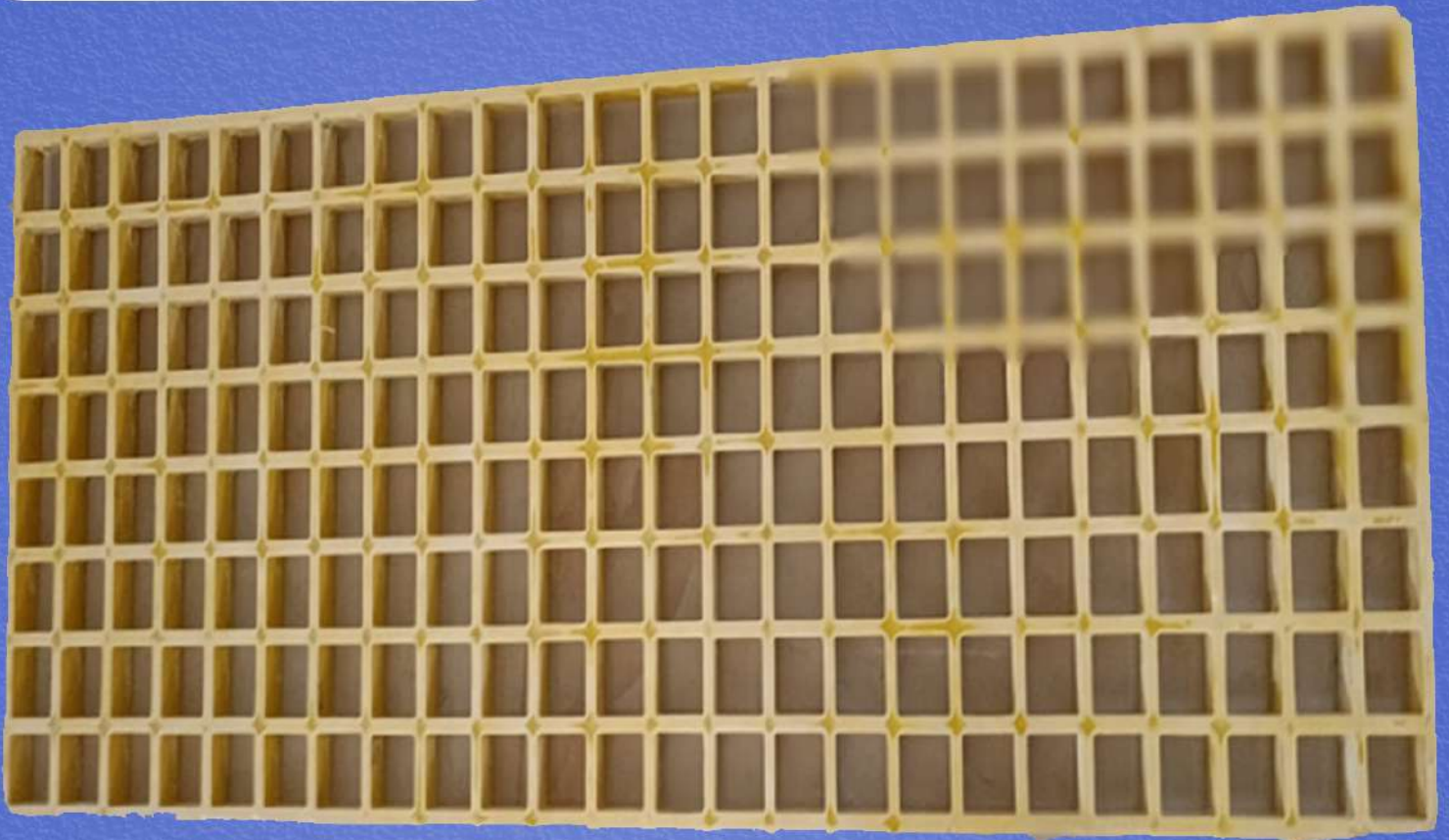
VISION

To be a respected player with great expertise in providing FRP solution to solar industries and others, meeting customer expectations with respect to quality, delivery and after sales services, thereby achieving customer delight.



WHY CHOOSE US

- On-time delivery
- Competitive pricing
- High quality standards
- Advance infrastructure
- Skilled and professional workforce
- Customized solution
- Customer-centric approach



HORIZONTAL WALKWAYS

About FRP

- ▶ Fiber-reinforced plastic (FRP) (also called fiber-reinforced polymer or fiber-reinforced plastic) is a composite material made of a polymer matrix reinforced with fiber.
- ▶ FRP- fiber Reinforced Plastic is well known, as one of the strongest and most durable material in the world.
- ▶ FRP is a composite material made of a thermosetting plastic resin reinforced by fine Fiber along with the use of additives and is commonly referred to by the name of Fiber.
- ▶ Thermoset plastics always remain in a permanent solid state.

Horizontal Walkway

Horizontal - Box Type Features:

- ✓ Light Weight
- ✓ Easy to transport and install at site
- ✓ No corrosion
- ✓ Anti-skid design
- ✓ UV Resistant

Technical Details:

Weight: 3.75 kg per meter
240/272/310mm wide
25mm Thick
Grating Size: 34mm/34mm

FRP Mounted Rooftop Walkway

APPLICATION

- ✔ Walkway for Solar Rooftop Panels.
- ✔ Walkway in Industries for roof top access
- ✔ Trench Cover in Chemical & Pharmaceutical Industries.
- ✔ Platforms & Walkway in Water Treatment Plants.

FRP Moulded Rooftop Walkway

FEATURES

- ✔ Excellent strength facilities to withstand heavy loads effectively
- ✔ High tensile strength prevents crumpling if heavy load bumps on it.
- ✔ Heat resistive nature keeps is temperature normal even under high temperature.
- ✔ Improved roof access and safety quotient during inspection.

FRP Moulded Rooftop Walkway

FEATURES (Continued)

- ✔ No corrosion resistance does not require colour to prevent inspection.
- ✔ Light weight of FRP aids for easy installation in a cost effective manner
- ✔ Does not demand maintenance and is a low cost solution.
- ✔ The ingenious design and FRP material ensure excellent slip resistance. (Anti-Skid Design)

FRP Walkway Mounting Accessories



Pop Rivet



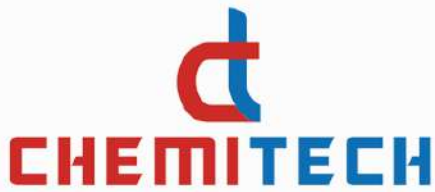
Rivet Backup Washer



Rivet Gun



Self Tapping Screws



“

**Your Customer Loyalty is
Greatly Appreciated at
Chemi Tech. Feel Free to Reach
Out to us for Any Concern.**

CONTACT US

Phone: +91 9717591111

Mail: akarsh@chemitechgroup.com

Factory Location: Plot No. L2B/1, Green
Industrial Park TSIC Jadcherla, Mahababnagar
Telengana – 509301

Warehouse Location: Noida, Jaipur, Indore, Pune,
Patiala, Haldwani , Lucknow

Chemi Tech Constructions Private Limited